

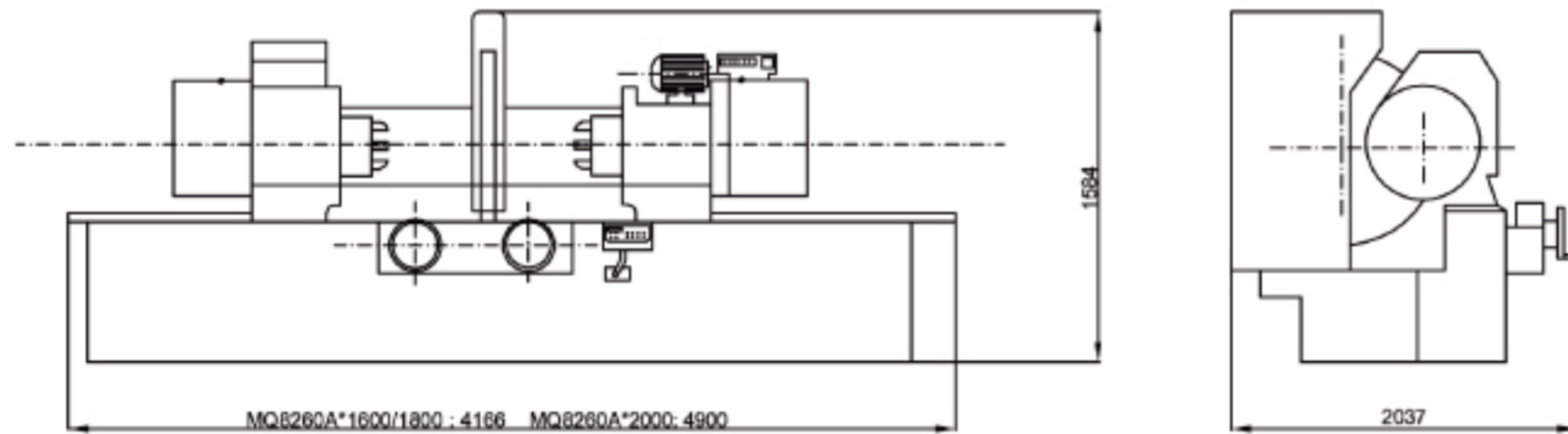
MQ8260A×1600/1800/2000

crankshaft grinding machine



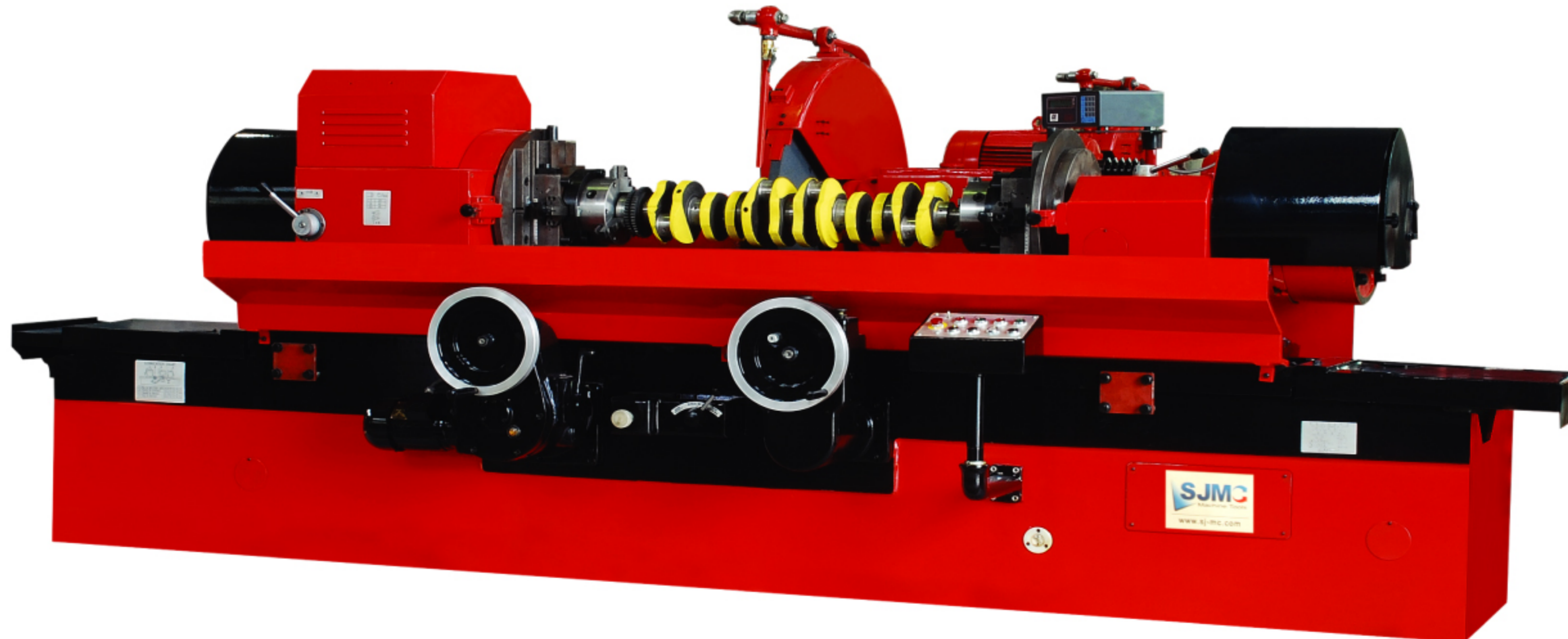
MQ8260A crankshaft grinding machine is intended for use in automobile, tractor and diesel engine repairing shops to regrind the crankpins and journals of crandshafts. Wheelhead rapid approach and withdrawal is hydraulically effected, the worktable is operated approached either by hand or by power. Power table traverse, either left or right, is momentarily actuated by depressing and releasing the electric push button in connection with the desired direction. This arrangement facilitates table spacing for the grinding of the next journal or crankpin.

- Four different work speeds are obtainable by making use of a double - speed motor and the belts in workhead.
- Union chucks are used in the headstock and tailstock for adjusting eccentricity up to 120 mm.
- Friction coupling is used in the headstock transmission chain for its easy adjustment.
- Table longitudinal traverse is operated either by hand or by power.
- Wheelhead rapid approach and withdrawal is effected by hydraulic means .
- Rolling guideways are used on wheelhead and made by high quality material . The wheel spindle being of 80 mm in diameter has good rigidity and strength.
- Plastic coated bed ways with less friction.
- The bed ways and wheelhead ways are lubricated in automatic cycle by means of oil pump.
- The digital display device can be optional.



Technical Specifications

Model	Unit	MQ8260A×1600	MQ8260A×1800	MQ8260A×2000	
Max. work diameter × Max. work length	mm	Φ600×1600	Φ600×1800	Φ600×2000	
Capacity	Max. swing over table	mm	Φ600	Φ600	
	Work diameter ground with steady rest	mm	Φ30×100	Φ30×100	Φ50×120
	Throw of crankshaft	mm	Φ110	Φ110	Φ120
	Max. work length ground in 3 jaw chuck	mm	1400	1600	1800
	Max. work length ground between centers	mm	1600	1800	2000
Headstock	Max. work weight	kg	120	120	150
	Center height	mm	300	300	300
Wheelhead	Work speed	rpm	25,45,95	25,45,95	30,45,65,100
	Max. cross movement	mm	185	185	185
	Wheelhead rapid approach & withdrawal	mm	100	100	100
	Wheelhead feed per guard of cross feed handwheel	mm	1	1	1
	Wheel feed per turn of cross feed handwheel	mm	0.005	0.005	0.005
Grinding wheel	Wheel spindle speed	rpm	740, 890	740, 890	740, 890
	Wheel peripheral speed	m/sec	25.6~35	25.6~35	25.6~35
	Wheel size	mm	Φ900×32×Φ305	Φ900×32×Φ305	Φ900×32×Φ305
Table	Table traverse per turn of handwheel coarse	mm	5.88	5.88	5.88
	Table traverse per turn of handwheel fine	mm	1.68	1.68	1.68
	Table swivel (taper 18/100)	degree	5°	5°	5°
	Table swivel per grad of scale (taper 1:50)		10'	10'	10'
Overall capacity of motor	kw	9.82	9.82	11.12	
Overall dimensions (L×W×H)	mm	4166×2037×1584	4166×2037×1584	4900×2037×1584	
Packing dimensions (L×W×H)	mm	4300×2200×2000	4300×2200×2000	5300×2200×2000	
Weight		kg	6000	6200	7000
		mm	0.005	0.005	0.005
Working accuracy	Ovality new standard	mm	0.01	0.01	0.01
	Cylindricity	mm	0.01	0.01	0.01
	Roughness	μ m	Ra 0.32	Ra 0.32	Ra 0.32



Standard Accessories

- jaw chucks
- wheel dresser
- wheel balancing arbor
- leveling wedge
- wheel adaptor
- driving dog
- vertical aligning stand
- horizontal aligning stand
- wheel balancing stand
- hanging measuring device
- steady rest
- centering device
- grinding wheel

Optional Accessories

- end dresser
- digital readout
- polisher
- diamond dresser

MQ8260A×1600/1800/2000

crankshaft grinding machine

Accessories

crankshaft grinding machine MQ8260A×1600/1800/2000

Packing List

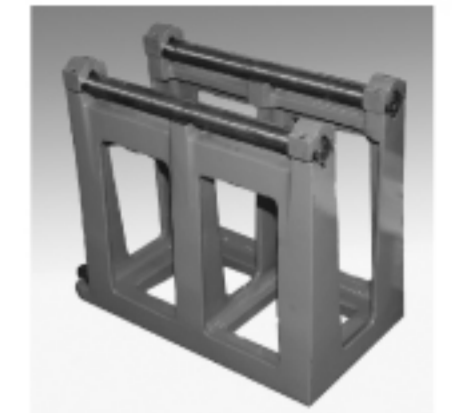
Name	Specifications	Part No.	Qty.	Remarks
Machine complete with electrical equipment and splash guards			1 unit	
Coolant tank with Pump DB-25	25L/min	HJ×71-02	1 set	
Wheel dresser		MQ8260A-60A	1 set	
Steady rest		MQ8260-65	1 set	
Cross L.H chuck		MQ8260-83	1 set	Optional Optional for MQ8260A-81-102 and 2 pcs for MQ8260A-81-103
Cross R.H chuck		MQ8260-84		
Balancing device		MQ8260-81		
Driving dog		MQ8260-85-001	1 set	
Vertical aligning stand		MQ8260-85-002	1 set	
Measuring bridge		MQ8260-85-105	1 pc	
Horizontal aligning stand		MQ8260-85-003	1 set	
Wheel adaptor		MQ8260-86	2 sets	one on machine
Three jaw chuck KZ-250			2 pcs	for MQ8260-83 & MQ8260A-84/1
Rolling element bearing	Φ 14.14	MQ8260-87	2 sets	
-do-	Φ 10	MQ8260-87/1	2 sets	for wheel-head
Belt pulley for Driving grinding wheel	Φ 750-Φ 550	MQ8260-30-105a	1 pc	On machine(50HZ)
	Φ 900-Φ 750	MQ8260-30-106	1 pc	
Grinding wheel	900×32×305	P900×32×305A 46LV35	1 pc	On machine
-do-	900×20×305	PS900×20×305A 60LV35	1 pc	
Hex. Socket key	6	S91-7	1 pc	
	8	S91-7	1 pc	
	10	S91-7	1 pc	
	12	S91-7	1 pc	
	14	S91-7	1 pc	
Single-end wrench	30	S91-2	1 pc	
Square socket wrench	17	HS92-3	1 set	
Hex. socket wrench	55	HS92-9	1 set	
Wheel extractor	M115×2	HS79-1	1 set	
Wheel hoisting lever	600	HS79-2	1 set	
Wheel balancing arbor	80	HS79-3	1 pc	
L.H. hex nut	B-M36×3L.H.	HJ13-3	1 pc	for Hs79-3
Washer	36×86	HJ59-1	1 pc	
Centre	Morse *5	HS77-1	1 pc	
Centre	Morse *5	HS77-7	1 pc	
Bolt	M16×50	J21-1	1 pc	
Pulling arm	65	HC91-1	1 pc	for centre grinding
Pulling level	M16×90	HC91-2	1 pc	
3-jaw chuck	KZ-200		2 pcs	for 83 & 84
L.H.chuck		MQ8260-83	1 set	Optional
Vee-belt	A-940		4 pcs	Two for workhead, the other for spare
	A-965		2 pcs	One for workhead, another for spare
	A-1041		6 pcs	Three for workhead, theother for spare
	B-1397		10 pcs	Five for Wheelhead, theother for spare
Leveling wedges		HJX81-1	11 sets	
Operating Lever		MQ8260-85-311	1 pc	
Lever		MQ8260-85-310	1 pc	
T-bolt	M20×90	MQ8260-21-308	2 pcs	MQ8260-60A
R.H.chuck		MQ8260A-84/1	1 set	Optional



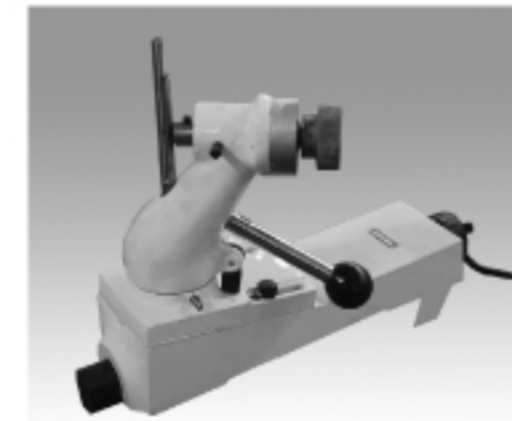
vertical stand



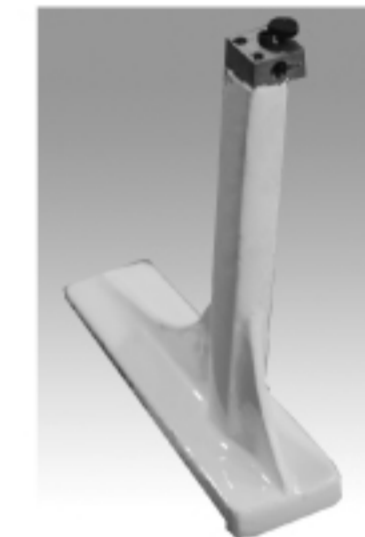
end dresser



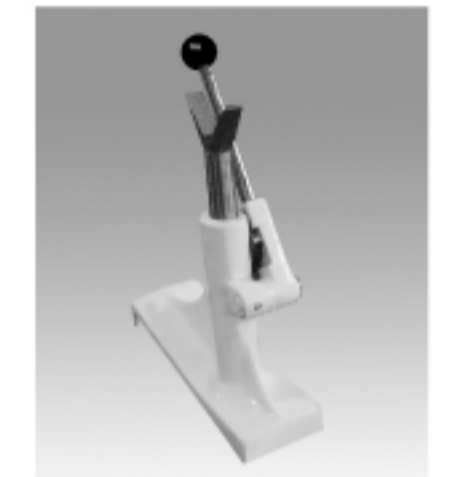
wheel balancing stand



wheel dresser



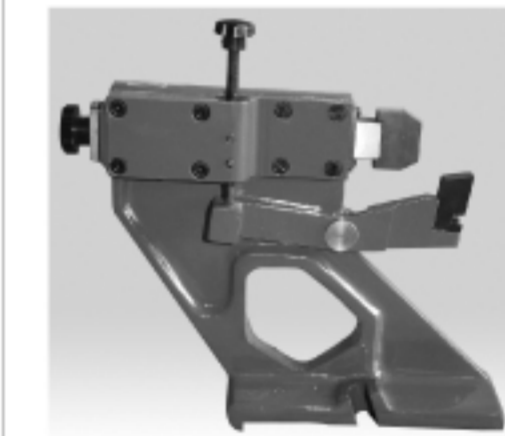
centering device



horizontal stand



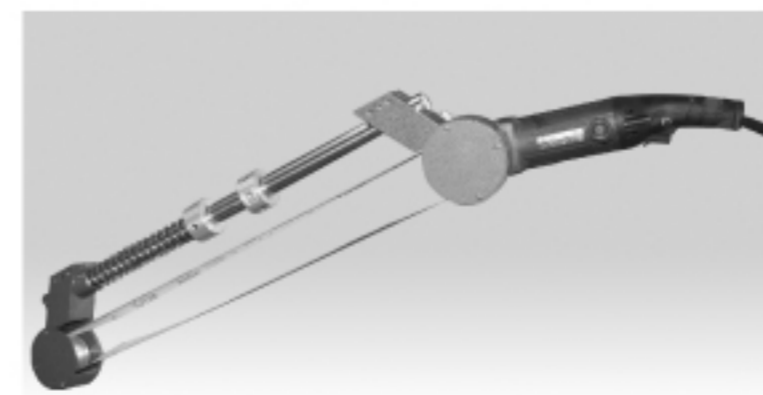
diamond dresser



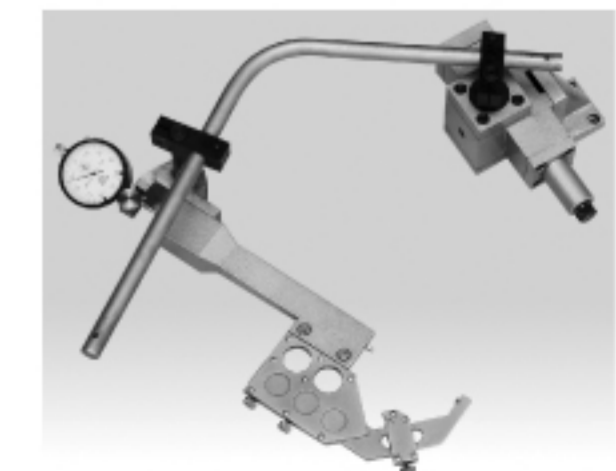
steady rest



digital readout



polisher



hanging measuring device